

Alfa Laval LKS 105 Tank Sight Glass

Tank Accessories

Introduction

The Alfa Laval LKS 105 Tank Sight Glass is a sight glass that permits direct distortion-free visual inspection of process conditions, products, liquid levels and cleaning inside pressureless storage tanks.

Welded into tanks or containers and installed above the liquid level, the LKS 105 Tank Sight Glass provide free view through a 105-mm leakproof opening made of toughened borosilicate glass. This makes it possible for operators to view the color, clarity, turbidity, or other critical characteristics of the product or tank cleaning status.

Inspection enables early detection of potential issues and quick response. This helps prevent costly downtime, protect plant equipment and improve operational efficiency.

Application

The Alfa Laval LKS 105 Tank Sight Glass is designed to facilitate clear, continuous and unobstructed inspection of various process conditions inside pressureless storage tanks across the dairy, food, beverage, personal care, biotechnology and pharmaceutical industries.

Benefits

- Improved operational efficiency
- Enables early detection and quick response to potential issues
- Reliable operation and more uptime
- Quick and easy to install
- Low maintenance requirements
- Withstand static pressure up to 1 bar

Standard design

The LKS 105 In-Line Sight Glass consists of a threaded flange which is welded onto the tank, two seal rings, a borosilicate glass plate and lock washer.



TECHNICAL DATA

Pressure

| | |
|------------------------|-----------------|
| Max. product pressure: | 100 kPa (1 bar) |
|------------------------|-----------------|

Temperature

| | |
|-------------------|-------|
| Max. temperature: | 90 °C |
|-------------------|-------|

Options

- MiniVision light fitting with push button for LKS (20 or 50 Watt)
- MiniVision light fitting without push button for LKS (50 Watt)
- Collar flange fixation for MiniVision light fitting without push button for LKS size 105

PHYSICAL DATA

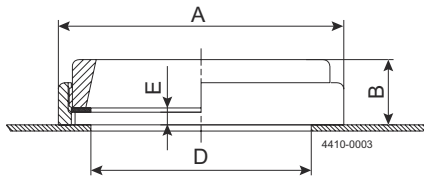
Materials

| | |
|-------------|--------------------------|
| Washers: | Stainless steel AISI 304 |
| Glass: | Borosilicate |
| Seal rings: | Para rubber, Klingerite |
| Finish: | Semi-bright |

Measurements

| | |
|---------|---------|
| Size: | Ø105 mm |
| Weight: | 1 kg |

Dimensions (mm)



| Size | 105 (mm) |
|------|----------|
| A | 136 |
| B | 31 |
| D | 105 |
| E | 6.5 |

This document and its contents are subject to copyrights and other intellectual property rights owned by Alfa Laval Corporate AB. No part of this document may be copied, re-produced or transmitted in any form or by any means, or for any purpose, without Alfa Laval Corporate AB's prior express written permission. Information and services provided in this document are made as a benefit and service to the user, and no representations or warranties are made about the accuracy or suitability of this information and these services for any purpose. All rights are reserved.

How to contact Alfa Laval

Up-to-date Alfa Laval contact details for all countries are always available on our website at www.alfalaval.com

Alfa Laval Sight Glass according to DIN 28120

Tank Accessories

Introduction

The Alfa Laval Sight Glass according to DIN 28120 is a sight glass that permits direct distortion-free visual inspection of process conditions, products, liquid levels and cleaning inside vessels. It is typically used for high-pressure, high-temperature processes.

Affordable and easy-to-operate, the leakproof sight glass makes it possible for operators to view the color, clarity, turbidity, or other critical characteristics of the product or cleaning status inside the vessel.

Inspection enables early detection of potential issues and quick response. This helps prevent costly downtime, protect plant equipment and improve operational efficiency.

Application

The sight glass is designed for use in high-pressure, high-temperature hygienic applications across the dairy, food, beverage, brewery, chemical, personal care, biotechnology, pharmaceutical and many other industries.

Benefits

- Improved operational efficiency
- Enables early detection and quick response to potential issues
- Reliable operation and more uptime
- Quick and easy to install
- Low maintenance requirements

Standard design

Engineered with a welding nozzle, the sight glass consists of a base flange, cover flange, gaskets, borosilicate glass disc, grooved collar nut, nuts and studs.

Dimensioned according to DIN 28120, the flange thicknesses guarantee distortion-free positioning of the sight glass disc, provided that the flanges are properly welded into or onto the wall of the vessel.

The pressure resistance of the glass disc is dependent on the care with which the bolts and nuts are tightened (always work on diametrically opposed pairs). For lubricated bolts with $R_a = 0.1$ mm, the recommended tightening torque values (Nm) are indicated in the table on page 2.

Made of borosilicate, the glass disc is able to withstand operating temperatures up to 280 °C (DIN 7080). All steel



parts are available with material certificate EN10204. 3.1B/AD-W2.

Available in sizes from DN 50 – DN 200, the sight glass can be fitted with an optional Alfa Laval miniVISION Light Fitting.

TECHNICAL DATA

Temperature

| | |
|--------------------|--|
| Temperature range: | -10 °C to +140 °C (EPDM), (higher temperatures up to 280 °C with gaskets of Klingersil) |
|--------------------|--|

Pressure

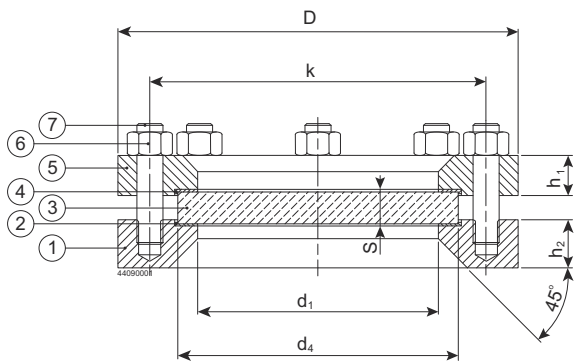
| | |
|------------------------|------------------------|
| Max. product pressure: | Max. 10 bar (1000 kPa) |
| Min. product pressure: | Full vacuum |

PHYSICAL DATA

Materials

| | |
|-----------------|--|
| Base flange: | AISI 316L, material certificate 3.1B/AD-W2 |
| Cover flange: | AISI 321, material certificate 3.1B/AD-W2 |
| Gaskets: | Klingersil C4400 (cover side)/EPDM (product side) |
| Glass disc: | Borosilicate to DIN 7080, material certificate 2.2 (max. 280 °C) |
| Bolts or studs: | To DIN 938/934 in A2-70 |

Dimensions (mm)



| Size DIN | Pressure Rating | Viewing Diameter | Sight glass disc | | Base flange and cover flange | | | | Bolts or studs and nuts | | |
|----------|-----------------|------------------|------------------|----|------------------------------|-----|----|----|-------------------------|------|------------------------|
| DN | (bar) | d1 | d4 | s | D | k | h1 | h2 | Number | Size | Tightening torque (Nm) |
| 50 | 10 | 80 | 100 | 15 | 165 | 125 | 16 | 30 | 4 | M16 | 28 |
| 80 | 10 | 100 | 125 | 15 | 200 | 160 | 20 | 30 | 8 | M16 | 20 |
| 100 | 10 | 125 | 150 | 20 | 220 | 180 | 22 | 30 | 8 | M16 | 26 |
| 125 | 10 | 150 | 175 | 20 | 250 | 210 | 25 | 30 | 8 | M16 | 32 |
| 150 | 10 | 175 | 200 | 25 | 285 | 240 | 30 | 36 | 8 | M20 | 47 |
| 200 | 10 | 225 | 250 | 30 | 340 | 295 | 35 | 36 | 8 | M20 | 63 |

Installation

The numbers in the following installation instructions refer to the drawing above.

After having correctly welded the base flange (1) onto or into the vessel wall, the gasket (2), the sight glass disc (3), the gasket (4) and the cover flange (5) are mounted one after the other and then the nuts (6) are tightened, always working on diametrically opposite pairs. The above indicated tightening torque values have to be strictly respected. Additional information may be taken from the DIN specification 28120.

Options

- Product wetted side of gasket in Klingersil C4400
- miniVISION light fitting

Ordering

When ordering, please state the following:

- DN size
- Material type of product wetted gasket side
- miniVISION light fitting, if needed

This document and its contents are subject to copyrights and other intellectual property rights owned by Alfa Laval Corporate AB. No part of this document may be copied, re-produced or transmitted in any form or by any means, or for any purpose, without Alfa Laval Corporate AB's prior express written permission. Information and services provided in this document are made as a benefit and service to the user, and no representations or warranties are made about the accuracy or suitability of this information and these services for any purpose. All rights are reserved.

200006226-1-EN-GB

© Alfa Laval Corporate AB

How to contact Alfa Laval

Up-to-date Alfa Laval contact details for all countries are always available on our website at www.alfalaval.com

Alfa Laval Union Sight Glass based on DIN 11851

Tank Accessories

Introduction

The Alfa Laval Union Sight Glass based on DIN 11851 is a sight glass that permits direct distortion-free visual inspection of process conditions, products, liquid levels and cleaning inside storage tanks, mixers, reactors, and other vessels. It is typically used for high-pressure, high-temperature processes.

Affordable and easy-to-operate, the leakproof sight glass makes it possible for operators to view the color, clarity, turbidity, or other critical characteristics of the product or cleaning status inside the vessel.

Inspection enables early detection of potential issues and quick response. This helps prevent costly downtime, protect plant equipment and improve operational efficiency.

Application

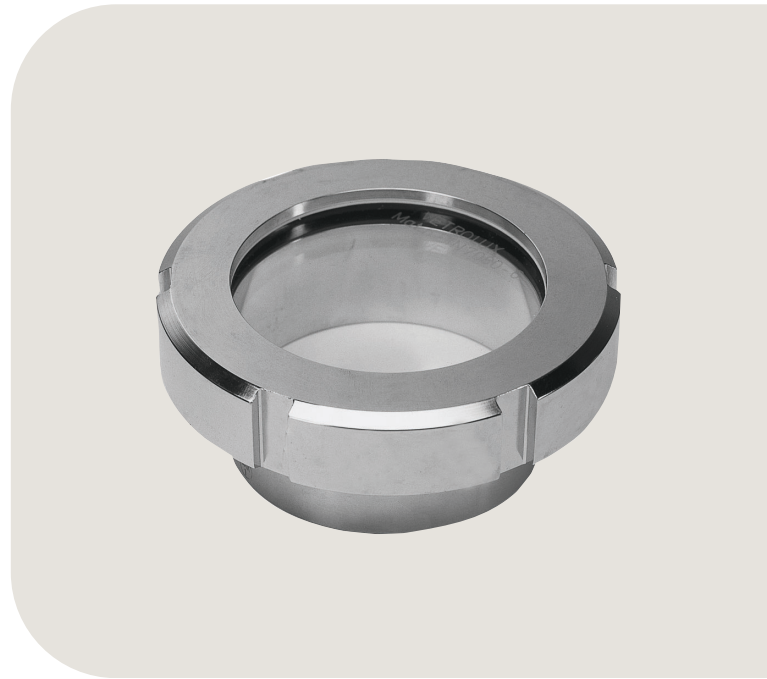
The Alfa Laval Union Sight Glass based on DIN 11851 is designed for the hygienic applications across the dairy, food, beverage, brewery, personal care, biotechnology and pharmaceutical industries.

Benefits

- Improved operational efficiency
- Enables early detection and quick response to potential issues
- Reliable operation and more uptime
- Quick and easy to install
- Low maintenance requirements

Standard design

The sight glass consists of: a welding flange (1); a grooved collar nut (2); a glass disc (3); and two gaskets (4-5). The product wetted side of the gasket is made of EPDM. The welding part (1) and glass disc (3) are delivered with a material certificate EN10204.3.1.B/2.2 as standard. The sight glass can be fitted with an optional Alfa Laval miniVISION Light Fitting.



TECHNICAL DATA

Temperature

| | |
|--------------------|--------------------------|
| Temperature range: | -10 °C to +140 °C (EPDM) |
|--------------------|--------------------------|

Pressure

| | |
|------------------------|--------------------------|
| Max. product pressure: | Max. 6 bar (600 kPa) |
| Min. product pressure: | 1 mbar absolute (1 Torr) |

PHYSICAL DATA

Materials

| | |
|-----------------------------|--|
| Welding flange: | AISI 316L, material certificate 3.1B/ADW2 to DIN 50049 |
| Grooved collar nut: | AISI 304 |
| Glass disc: | Borosilicate to DIN 7080 (max. 280 °C), material certificate 2.2 |
| Gasket cover side: | PTFE |
| Gasket product wetted side: | EPDM |

Dimensions (mm)



| Size DIN DN | ID | a | A | OD | D |
|----------------|-----|----|----|-----|-----|
| 65 | 65 | 22 | 49 | 72 | 112 |
| 100 | 100 | 32 | 65 | 106 | 148 |
| 125 | 125 | 20 | 60 | 132 | 178 |

Options

- Product wetted side of gasket in FPM, PTFE or Silicone
- miniVISION light fitting

Ordering

- DN size
- Material type of product wetted gasket side
- miniVISION light fitting, if needed

This document and its contents are subject to copyrights and other intellectual property rights owned by Alfa Laval Corporate AB. No part of this document may be copied, re-produced or transmitted in any form or by any means, or for any purpose, without Alfa Laval Corporate AB's prior express written permission. Information and services provided in this document are made as a benefit and service to the user, and no representations or warranties are made about the accuracy or suitability of this information and these services for any purpose. All rights are reserved.

How to contact Alfa Laval

Up-to-date Alfa Laval contact details for all countries are always available on our website at www.alfalaval.com

Alfa Laval miniVISION Light Fitting

Tank Accessories

Introduction

The Alfa Laval miniVISION Light Fitting is a luminaire that fits the Alfa Laval Union Sight Glass based on DIN 11851, DIN 28120, and Alfa Laval LKS Sight Glass to illuminate and thereby provide free view of the process conditions inside tanks and vessels. It is suitable for all types of lighting situations where process hygiene is important.

Application

The Alfa Laval miniVISION Light Fitting is designed to aid visual inspection of the process conditions inside tanks by lighting process conditions, products, and cleaning inside vessels across the dairy, food, beverage, personal care, biotechnology and pharmaceutical industries.

Benefits

- Reliable operation
- One size for use on different sightglass diameter
- Quick and easy to install
- Low maintenance requirements
- Assists with early detection and response
- Helps prevent costly downtime
- Available with LED lighting
- Suitable for continuous operation

Standard design

The Alfa Laval miniVISION Light Fitting consists of a housing and cover in AISI 304 stainless steel. Independent of internal vessel pressure, vacuum and temperature, it features a glass disc resistant to high temperatures, and gaskets resistant to corrosion and deformation.

The miniVISION is available in two sizes: type 53 and type 70. Type 53 provides sight and light in a single assembly combining the sight glass and the miniVISION Light Fitting. Type 70 only provides illumination.

The miniVISION is available in two versions: halogen and LED lighting.

The miniVISION Light Fitting can be ordered separately or together in packages with either the Alfa Laval LKS, or the Alfa Laval Sight Glass according to DIN 28120, or the Alfa Laval Union Sight Glass based on DIN 11851.



Working principle

The Alfa Laval miniVISION Light Fitting illuminates process conditions or products in tanks or vessels, making visual inspection possible.

TECHNICAL DATA

| | |
|-------------------|----------|
| Cable gland: | Pg 9 |
| Supply voltage: | AC or DC |
| Terminal voltage: | 24 V |

Power

| | |
|---------------------|---------------|
| Type 53 (hallogen): | 20 or 50 Watt |
| Type 70 (hallogen): | 50 Watt |
| Type 53 (LED): | 4 Watt |

| | |
|-------------------|--|
| Max. current: | 4.2 A |
| Bulb: | Halogen |
| Lamp sockets: | 2-pin Socket G4 (20W) Socket GY 6.35 (50W) |
| Protection class: | IP 65 |

Temperature

| | |
|------------------------------|------------------|
| Ambient temperature: | -20 °C to +40 °C |
| Enclosure protection degree: | IP 65 |

PHYSICAL DATA

Materials

| | |
|--------------------|----------|
| Housing and cover: | AISI 304 |
|--------------------|----------|

Installation

The luminaire is normally mounted by means of its fixation elements, suitably slotted to take a fixing bolt M4. This bolt fits a drilled and tapped hole in the cover flange of Sight Glass acc. to DIN 28120 as well as in the grooved collar nut of a screwed sight glass (LKS or Union Sight Glass based on DIN 11851).

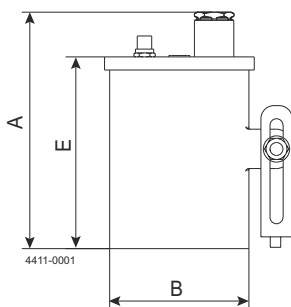
The very small dimensions of miniVISION type 53 enable sight and light in one assembly, still providing a high lighting power. It is possible to change the bulbs without having to demount the bolted-on luminaire.



Note! In case of repeated use of miniVISION type 53 within a short period, the temperature raise of the housing has to be observed.

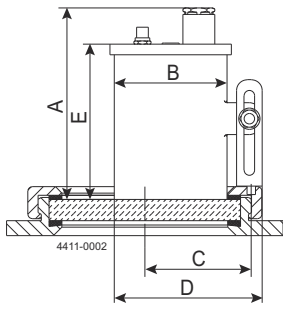
Dimensions (mm)

miniVISION Light Fitting type 53 with push button.



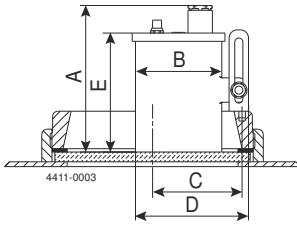
| | | |
|----------|----------|----------|
| A | B | E |
| 90 | 53 | 73 |

Sight glass LKS 78 and 120 with miniVISION type 53.



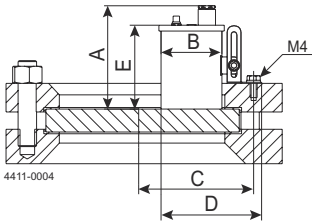
| LKS size | A | B | C | D | E | Weight (kg) |
|----------|----|----|----|----|----|-------------|
| 78 | 90 | 53 | 48 | 72 | 73 | 0.30 |
| 120 | 90 | 53 | 69 | 72 | 73 | 0.30 |

Sight glass LKS 105 with miniVISION type 53.



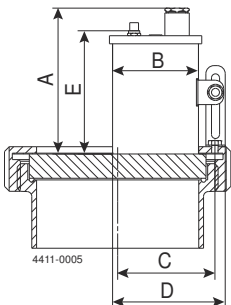
| A | B | C | D | E |
|----|----|----|----|----|
| 90 | 53 | 59 | 72 | 73 |

Sight Glass acc. to DIN 28120 with miniVISION type 53.



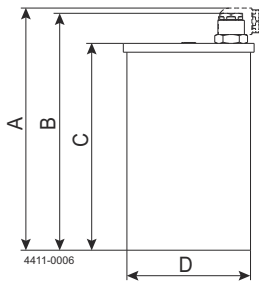
| DN | A | B | C | D | E | Weight (kg) |
|-----|----|----|-----|----|----|-------------|
| 100 | 90 | 53 | 87 | 90 | 73 | 0.30 |
| 125 | 90 | 53 | 100 | 90 | 73 | 0.30 |
| 150 | 90 | 53 | 112 | 90 | 73 | 0.30 |

Union Sight Glass based on DIN 11851 with miniVISION type 53.



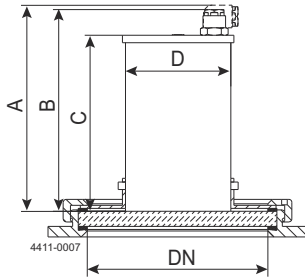
| DN | A | B | C | D | E | Weight (kg) |
|-----|----|----|----|----|----|-------------|
| 65 | 90 | 53 | 39 | 72 | 73 | 0.30 |
| 100 | 90 | 53 | 57 | 72 | 73 | 0.30 |
| 125 | 90 | 53 | 69 | 72 | 73 | 0.30 |

miniVISION Light Fitting type 70.



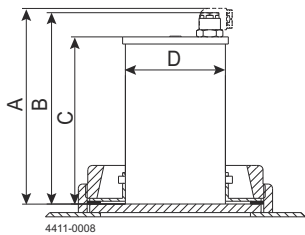
| A | B | C | D |
|-----|-----|-----|----|
| 141 | 134 | 117 | 70 |

Sight glass LKS 78 with miniVISION type 70.



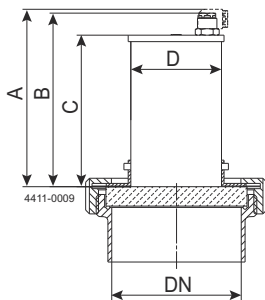
| DN | A | B | C | D |
|----|-----|-----|-----|----|
| 78 | 141 | 134 | 117 | 70 |

Sight glass LKS 105 with miniVISION type 70.



| A | B | C | D |
|-----|-----|-----|----|
| 141 | 134 | 117 | 70 |

Union Sight Glass based on DIN 11851 with miniVISION type 70.



| DN | A | B | C | D |
|----|-----|-----|-----|----|
| 65 | 141 | 134 | 117 | 70 |



Note! For size DN 65 (only).

Ordering

When ordering, please state the following:

- Type and size of sight glass on which the luminaire has to be mounted
- Power
- Sight Glass type to be delivered with the light fitting, if needed

This document and its contents are subject to copyrights and other intellectual property rights owned by Alfa Laval Corporate AB. No part of this document may be copied, re-produced or transmitted in any form or by any means, or for any purpose, without Alfa Laval Corporate AB's prior express written permission. Information and services provided in this document are made as a benefit and service to the user, and no representations or warranties are made about the accuracy or suitability of this information and these services for any purpose. All rights are reserved.

200006898-1-EN-GB

© Alfa Laval Corporate AB

How to contact Alfa Laval

Up-to-date Alfa Laval contact details for all countries are always available on our website at www.alfalaval.com

Alfa Laval LKGG-1 and LKGL-1 In-Line Sight Glass

Tank Accessories

Introduction

The Alfa Laval LKGG-1 and LKGL-1 In-Line Sight Glass permits direct, distortion-free visual inspection of process conditions, product flow, liquid levels and cleaning status inside pipelines.

Affordable and easy-to-operate, the leakproof in-line sight glass makes it possible for operators to view the color, clarity, turbidity, or other critical characteristics of the product or cleaning status of the pipelines.

Inspection enables early detection of potential issues and quick response. This helps prevent costly downtime, protect plant equipment and improve operational efficiency.

Application

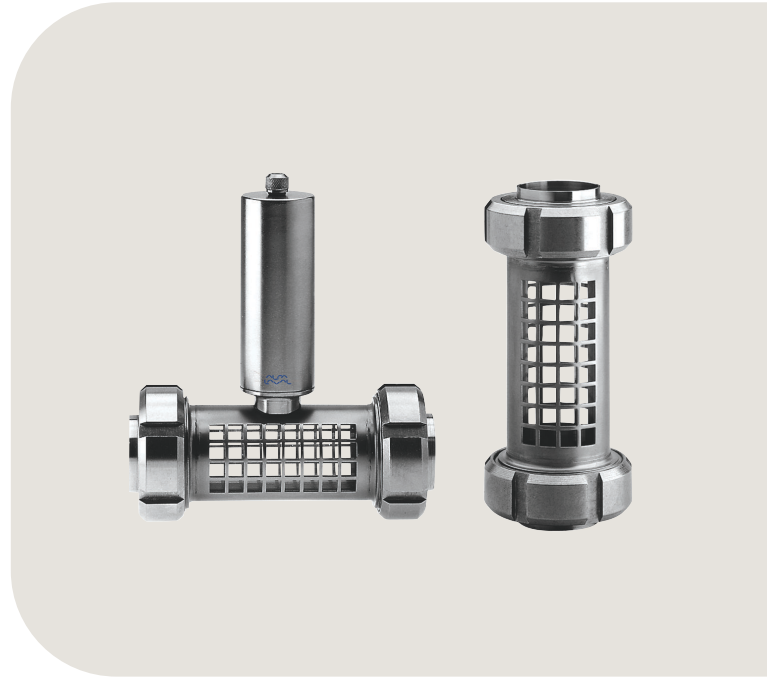
The LKGG-1 and LKGL-1 In-Line Sight Glass is used in pipelines to facilitate clear, continuous and unobstructed inspection of various process conditions in hygienic applications across the dairy, food, beverage, personal care, biotechnology and pharmaceutical industries.

Benefits

- Improved operational efficiency
- Enables early detection and quick response to potential issues
- Reliable operation and more uptime
- Quick and easy to install
- Low maintenance requirements

Standard design

The Alfa Laval In-Line Sight Glass range is available in two types: Alfa Laval LKGG-1 and LKGL-1. The Alfa Laval LKGG-1 In-Line Sight Glass has a perforated stainless steel shield tube fitted with a welding union at each end. A special glass tube is fixed in the shield tube to assure it is unaffected by potential stresses in the pipelines. The LKGL-1 is similar to LKGG-1 but has a stainless steel light fitting welded onto the shield tube to permit illumination of the product.



TECHNICAL DATA

Temperature

| | |
|---------------------------------------|-------------|
| Recommended max. working temperature: | 110 °C |
| Max. thermal shock: | 100 °C |
| Bulb: | 24 V / 24 W |
| Bulb socket: | B 15 |

Pressure

| | |
|---------------------------|-----------------|
| Max. test pressure (20°C) | 500 kPa (5 bar) |
|---------------------------|-----------------|

Sizes

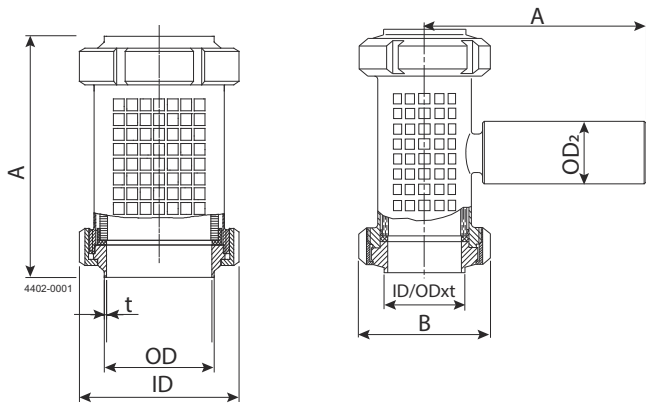
25 mm, 38 mm, 51 mm, 63.5 mm and 76 mm

PHYSICAL DATA

Materials

| | |
|--------------|--|
| Seals: | EPDM rubber |
| Steel grade: | Stainless steel AISI 304 or acidresistant steel AISI 316 |
| Glass disc: | Borosilicate |

Dimensions (mm)



| Size | 25 mm | 38 mm | 51 mm | 63.5 mm | 76.1 mm | 101.6 mm |
|-------------|-------|-------|-------|---------|---------|----------|
| A | 175 | 181 | 188 | 194 | 200 | - |
| B | 64 | 77 | 91 | 106 | 122 | 148 |
| OD | 26.2 | 38.9 | 51.6 | 64.3 | 76.6 | 102 |
| ID | 22.5 | 35.5 | 48.5 | 60.5 | 72 | 97.6 |
| t | 1.85 | 1.7 | 1.55 | 1.9 | 2.3 | 2.2 |
| Weight (kg) | 1.0 | 1.5 | 2.0 | 2.5 | 3.6 | - |



Note!

- LKGL-1: +0.5 kg
- Size 101.6 mm only for LKGG-1

Options

- Material grades
- Seals of Nitrile (NBR)

Ordering

Please state the following when ordering:

- Materials, AISI 304 or 316
- Type: LKGG-1 or LKGL-1
- Size

This document and its contents are subject to copyrights and other intellectual property rights owned by Alfa Laval Corporate AB. No part of this document may be copied, re-produced or transmitted in any form or by any means, or for any purpose, without Alfa Laval Corporate AB's prior express written permission. Information and services provided in this document are made as a benefit and service to the user, and no representations or warranties are made about the accuracy or suitability of this information and these services for any purpose. All rights are reserved.

200006889-1-EN-GB

© Alfa Laval Corporate AB

How to contact Alfa Laval

Up-to-date Alfa Laval contact details for all countries are always available on our website at www.alfalaval.com

Alfa Laval LKFL In-line Sight Glass

Tank Accessories

Introduction

The Alfa Laval LKFL In-line Sight Glass is an accurate, tight-fitting gauge glass that permits direct distortion-free visual inspection of process conditions, products, liquid levels and cleaning in a pipeline.

Application

The LKFL In-line Sight Glass is a rigid, hygienic sight glass housed in acid-resistant steel. It is designed for visual inspection of a product in a hygienic pipeline across the food, beverage, pharmaceutical and many other industries.

Benefits

- Reliably clear viewing quality
- Provide clear, continuous and unobstructed visibility of processes
- Sight glass construction and range

Standard design

The Alfa Laval LKFL In-line Sight Glass consists of a stainless steel semi-bright tube with two screw connections for the borosilicate glass discs. The connections are placed opposite each other to enable positioning of the glass very close to the internal wall of the tube to facilitate cleaning.

The glass discs are internally sealed with EPDM rubber seals and, from the outside, pressed against the seal by a nut via a spacer.

An optional halogen light source, which is fitted onto one of the sockets, is available. The halogen light source consists of two stainless steel tubes assembled with a clamp.

The standard LKFL connections are welding ends. Upon request, the LKFL In-Line Sight Glass is also available with male part connections.



TECHNICAL DATA

Pressure

| | |
|------------------------|-------------------|
| Max. product pressure: | 2000 kPa (20 bar) |
| Min. product pressure: | Full vacuum |
| Max. pressure shock: | 3000 kPa (30 bar) |

Temperature

| | |
|--------------------|--------------------------|
| Temperature range: | -10 °C to +140 °C (EPDM) |
|--------------------|--------------------------|

| | |
|-----------------------|-----------------------------|
| Max. thermal shock: | D t 120 °C (140 °C P 20 °C) |
| Bulb, halogen: | 24 V DC, 24 Watt, G4 |
| Bulb socket standard: | G4, Max. 35 V DC |
| Cable: | Max. OD 10.5 mm |
| Reflector: | OD 50 mm |

PHYSICAL DATA

Materials

| | |
|-----------------------|--------------------------------|
| Product wetted parts: | Acid-resistant steel AISI 316L |
| Other steel parts: | Stainless steel AISI 304 |
| Glass: | Borosilicate glass |
| Seals: | EPDM rubber |
| Finish: | Semi bright |

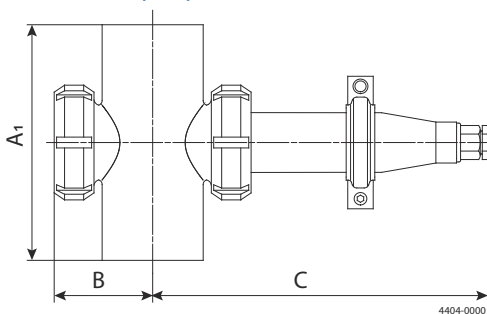
Sizes

38 mm (1 1/2"), 51 mm (2"), 63.5 mm (2 1/2"), 76.1 mm (3") and 101.6 mm (4")

Connections

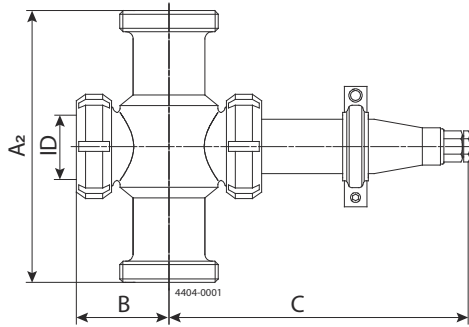
Type LKFL sight glass is available with welding ends or with male parts according to optional standards, e.g. ISO, DS, SMS, DIN, BS, or with clamp liners

Dimensions (mm)



| Size (mm) | 1½" | 2" | 2½" | 3" | 4" |
|---------------|-----|-----|-----|-----|-----|
| A1 | 103 | 152 | 152 | 205 | 205 |
| B | 50 | 66 | 64 | 73 | 91 |
| C | 179 | 194 | 191 | 199 | 244 |
| ID | 20 | 34 | 34 | 44 | 60 |
| Weight (kg) | | | | | |
| Without light | 0.8 | 1.9 | 1.2 | 1.7 | 3.3 |
| With light | 1.3 | 2.5 | 1.8 | 2.3 | 3.9 |

Overall length



| Size (mm) | 1½" | 2" | 2½" | 3" | 4" |
|------------------|-----|-----|-----|-----|-----|
| SMS | 142 | 192 | 200 | 252 | 274 |
| DS | 142 | 192 | 200 | 252 | 252 |
| ISO clamp | 128 | 177 | 177 | 229 | 236 |
| IDF for ISO tube | 145 | 195 | 195 | 247 | 247 |
| IDF for SWG tube | 145 | 195 | 195 | 247 | 264 |
| BS | 146 | 196 | 196 | 248 | 258 |
| DIN | 146 | 196 | 202 | 264 | 264 |

Options

Material grades

- Seals of Nitril (NBR) or flourinated rubber (FPM)

Ordering

Please state the following when ordering:

- Size
- Connections. If male parts, please state standard

This document and its contents are subject to copyrights and other intellectual property rights owned by Alfa Laval Corporate AB. No part of this document may be copied, re-produced or transmitted in any form or by any means, or for any purpose, without Alfa Laval Corporate AB's prior express written permission. Information and services provided in this document are made as a benefit and service to the user, and no representations or warranties are made about the accuracy or suitability of this information and these services for any purpose. All rights are reserved.

How to contact Alfa Laval

Up-to-date Alfa Laval contact details for all countries are always available on our website at www.alfalaval.com